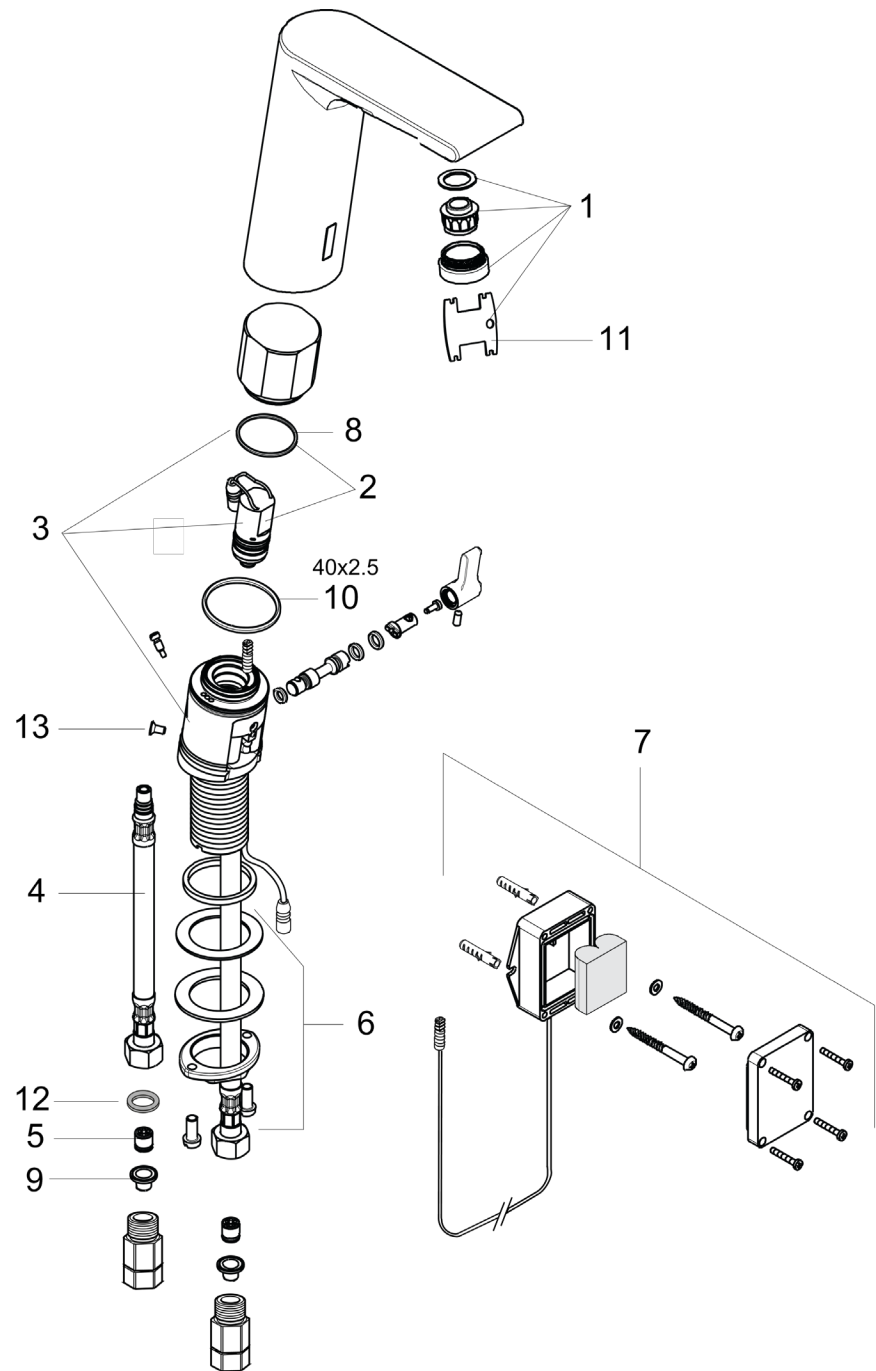




Exploded Drawing

Year of production: **08/11 - 05/14**



Spare part list

Year of production: **08/11 - 05/14**

| Pos. | Description                         | Article Number | PC | PU |
|------|-------------------------------------|----------------|----|----|
| 1    | aerator M24x1 (5 l/min)             | 99818886       | 10 | 1  |
| 2    | solenoid valve                      | 99816699       | 16 | 1  |
| 3    | electronics incl. solenoid valve    | 99818883       | 21 | 1  |
| 4    | connection hose 450 mm M8x0,75 G3/8 | 99523844       | 10 | 1  |
| 5    | non return valve DW 10              | 99454151       | 3  | 1  |
| 6    | fixing set (Ø 32)                   | 99811535       | 7  | 1  |
| 7    | battery box                         | 99816700       | 10 | 1  |
| 8    | O-ring 31x2                         | -----          | 2  | 1  |
| 9    | filter packing                      | 99818887       | 4  | 1  |
| 10   | lever collar                        | 99816702       | 1  | 1  |
| 11   | service tool                        | -----          | 5  | 1  |
| 12   | sealing set                         | -----          | 2  | 1  |
| 13   | screw                               | -----          | 1  | 1  |
| a    | fixation extension 35 mm            | 99811540       | 12 | 1  |

Troubleshooting

| Problem   | Possible Cause   | Solution  |
|---|--|---|
| The LED flashes while the faucet is running                 | - The battery is low, but is still usable                    | - No immediate action is necessary, but prepare to replace the battery. |
| The LED lights continuously and the faucet does not run     | - The battery is dead  | - Replace the battery   |
| The LED flashes while the faucet is turned off              | - The faucet is in reduced range mode                        | - Normal operation, not a problem                                       |
| The water stream is unattractive                            | - The faucet has recently been installed or serviced         | - No action needed: the stream will clear after several uses            |
| The flow of water reduces over time                         | - Debris in the filters                                      | - Follow the cleaning procedure   |
| Model 12171xx1: The water is not warm enough or is too warm | - The handle has not been justified                          | - Justify the handle  |
| Model 12172xx1: The water is not warm enough or is too warm | - The temperature must be set                                | - Set the temperature   |
| Hot water bleeds into the cold supply or vice versa         | - The check valve(s) is dirty or worn                        | - Replace the check valve(s) (item 96456000 on the parts sheet).        |
| The faucet turns on unexpectedly                            | - Water droplets on sensor window                            | - Dry the sensor window   |
|   | - The lavatory is small or is highly reflective              | - Reduce the sensor range   |
|   | - A strong light source shines directly on the sensor window | - Block the light source  |
|   | - The solenoid is dirty or worn.                             | - Replace the solenoid.   |

